

36 Speckledwood Way  
Newcastle Great Park  
Newcastle Upon Tyne  
NE13 9ED

£350,000



36 Speckledwood Way  
Newcastle Great Park  
Newcastle Upon Tyne  
NE13 9ED

- 4 Bedrooms
- Kitchen Diner
- Cloaks WC
- Bathroom
- Beautiful Garden

- Living Room
- Utility Room
- En-suite Shower Room
- Garage



4



2



1



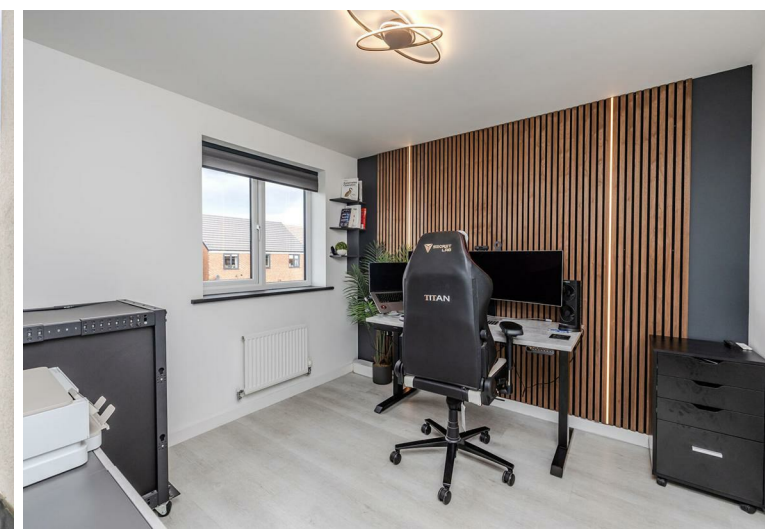
C

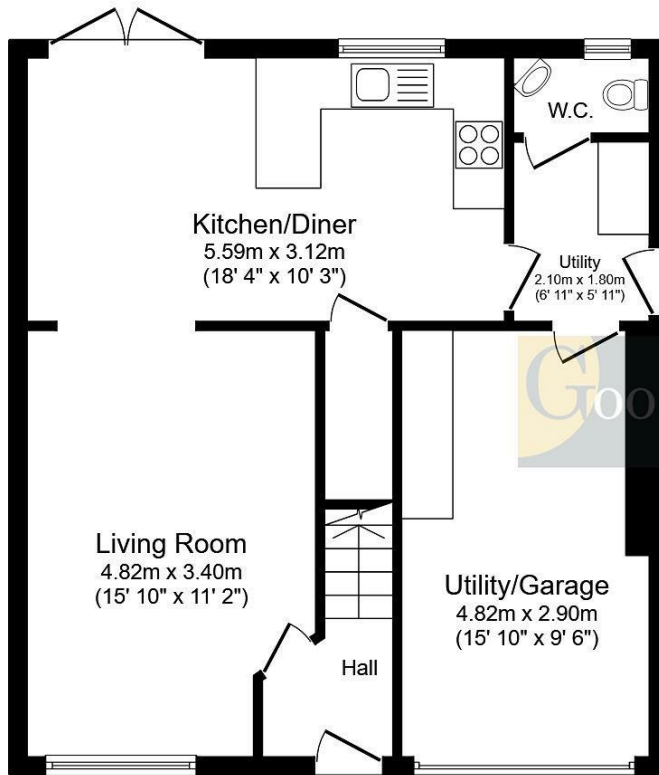




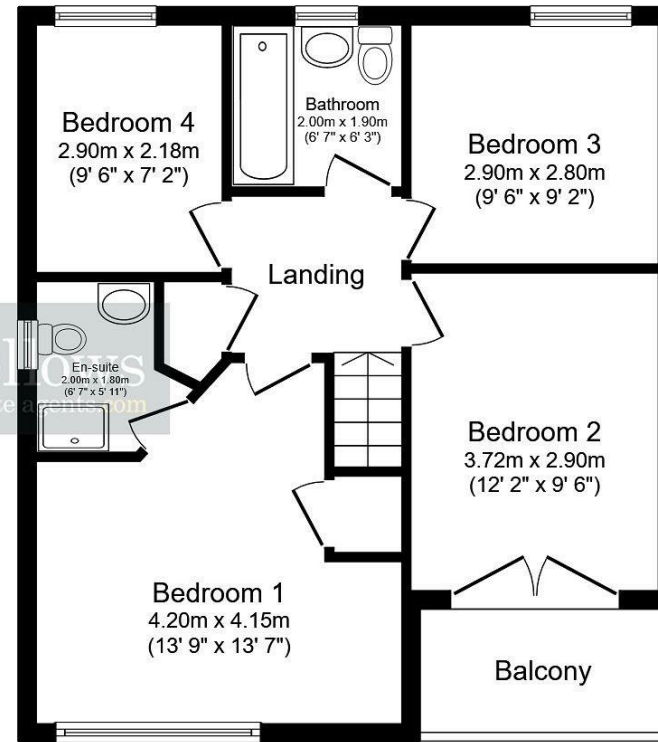


36 Speckledwood Way, Newcastle Great Park, Newcastle Upon Tyne, NE13 9ED





Ground Floor



First Floor

Total floor area: 114.4 sq.m. (1,232 sq.ft.)

This floor plan is for illustrative purposes only. It is not drawn to scale. Any measurements, floor areas (including any total floor area), openings and orientations are approximate. No details are guaranteed, they cannot be relied upon for any purpose and do not form any part of any agreement. No liability is taken for any error, omission or misstatement. A party must rely upon its own inspection(s).



EPC Rating: C  
Council Tax Band: E

Whilst every care has been taken to prepare these particulars, they are for guidance purposes only. All measurements are approximate and whilst every care has been taken to ensure their accuracy, they should not be relied upon and potential buyers/tenants are advised to recheck the measurements. The agent has not tested any equipment, services, fixtures or fittings and makes no representation regarding their condition.

CONTACT

128 The Roman Way, West Denton,  
Newcastle upon Tyne, NE5 5AD

E:  
westdenton@goodfellowsestateagents.com  
T: 0191 2677500

